



Who is the GPN Fellowship for?

The programme is for newly qualified NMC registered nurses and new to primary care nurses who have the drive to develop into competent GPNs and invest in shaping the future of general practice. This 2-year programme encourages working within and across PCNs, leading to opportunities for integrated working and relationship building, enabling the sharing of experiences and have the support of experienced mentors to facilitate the transition into general practice.

Eligibility for GPN Fellowship

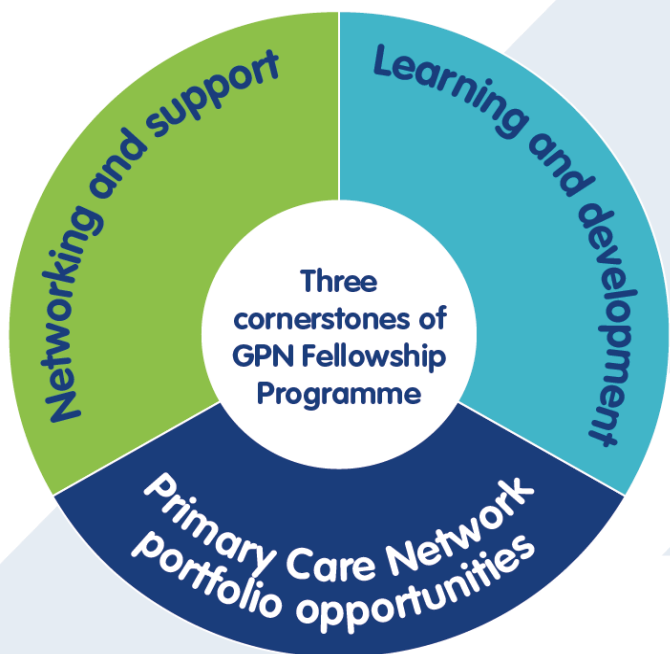
You can access the fellowship programme if you:

- Are an NMC Registered Nurse.
- Have a substantive salaried or partner role within primary care within the Greater Manchester (GM) area.
- Have qualified within the last 12 months or have joined primary care within the last 12 months from another area of nursing.

Benefits of the GPN Fellowship

You will receive:

- A structured supportive induction.
- Sessions of learning, tailored to the needs of a GPN
- Access to networks and peer support.
- Coaching and mentorship.
- Access to development opportunities.
- Leadership development, support, and quality improvement.



Facilitating networking opportunities with others in GM to help support career development.

This includes access to:

- MDT working opportunities
- Coaching and Mentoring
- 1:1 sessions with GPN Leads

Additional training to enhance fellow's primary care knowledge and skills.

Fellows will develop skills in:

- Population health management
- Leadership and management
- Coaching and supervision

Financial support

- £444.16 per month paid to practice for 1 CPD session per week.
- Can either be used as salary support or passed onto fellow after 30% practice costs deducted.

Multi-disciplinary and integrated working is key to the future of primary care. To support this, the programme will help fellows develop system-level thinking and working.

Fellows will have opportunities to:

- Job shadow within a Primary Care Network
- Develop a project that addresses a population health need